

"Yek  
=140"

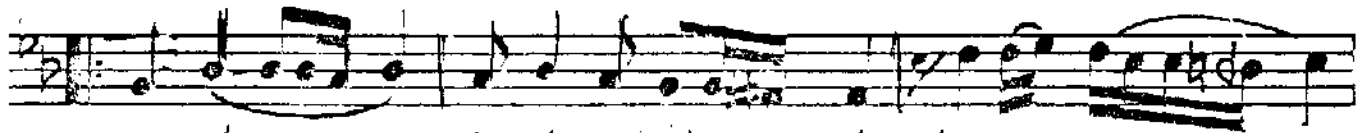
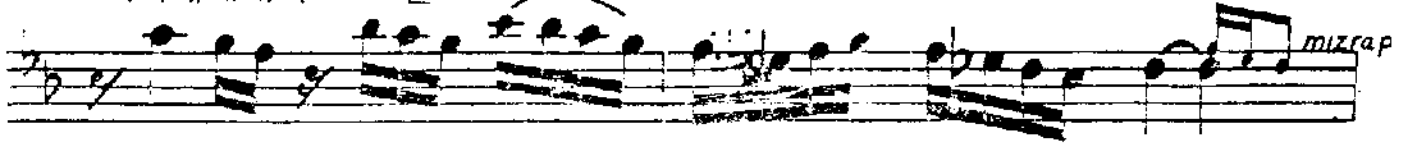
# NİHAVENT ŞARKI

MÜZİK: VEFİK ATAÇ  
SÖZ: AHMET İLGAZ

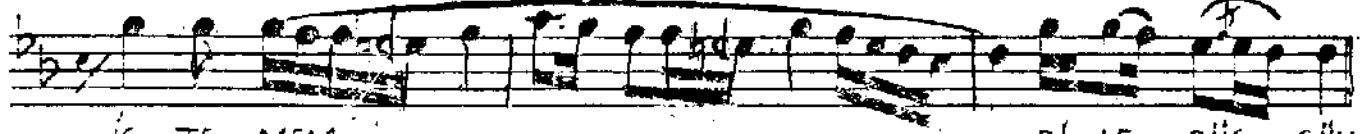
"Sevgin içimde gizli, istemem diledüğün"



ARANAĞME



SEVGİN..... İÇİNDE GİZ..... LI İS TE MEM.....



İS TE MEM..... Dİ LE DÜS SÜN



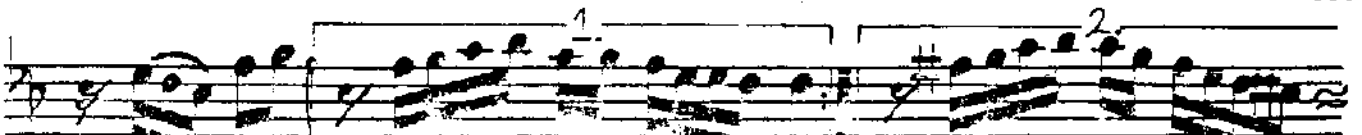
SAZ..... SAZ.....



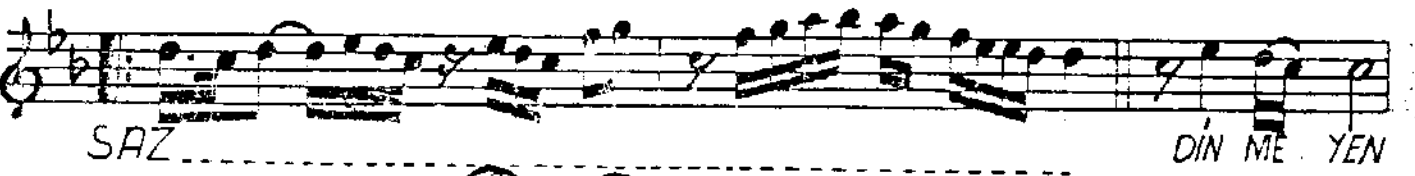
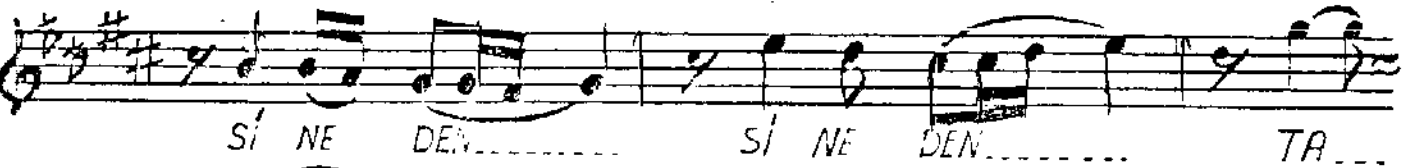
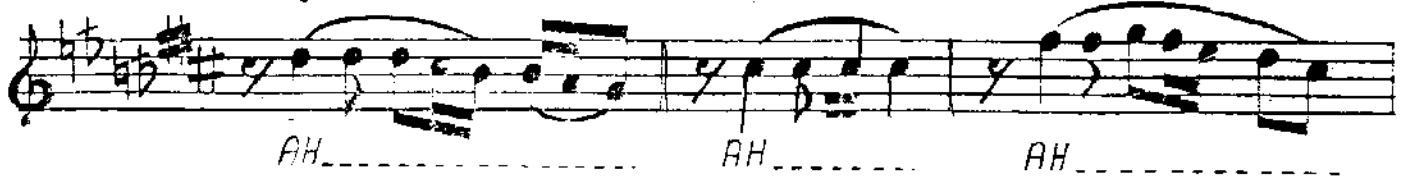
TAŞ MA SIN GÖZ DEN YA ŞIN.....



AK..... SIN GÖ NÜ E..... SÜN SAZ..... SAZ.....



SAZ.....



SEVGİN İÇİMDE GİZLİ, İSTEMEM DİLE DÜŞSÜN.  
TAŞMASIN GÖZDEN YAŞIM, AKSİN GÖNÜLE DÜŞSÜN.  
ÂH İLE ANDIKÇA BEN, SİNEDEN, TÂ DERİNDEN;  
DİNMEYEN İZDIRÂBIM, MİZRÂBA, TELE DÜŞSÜN,...

4000 - 7 + 7 - 11

AHMET İLGAZ